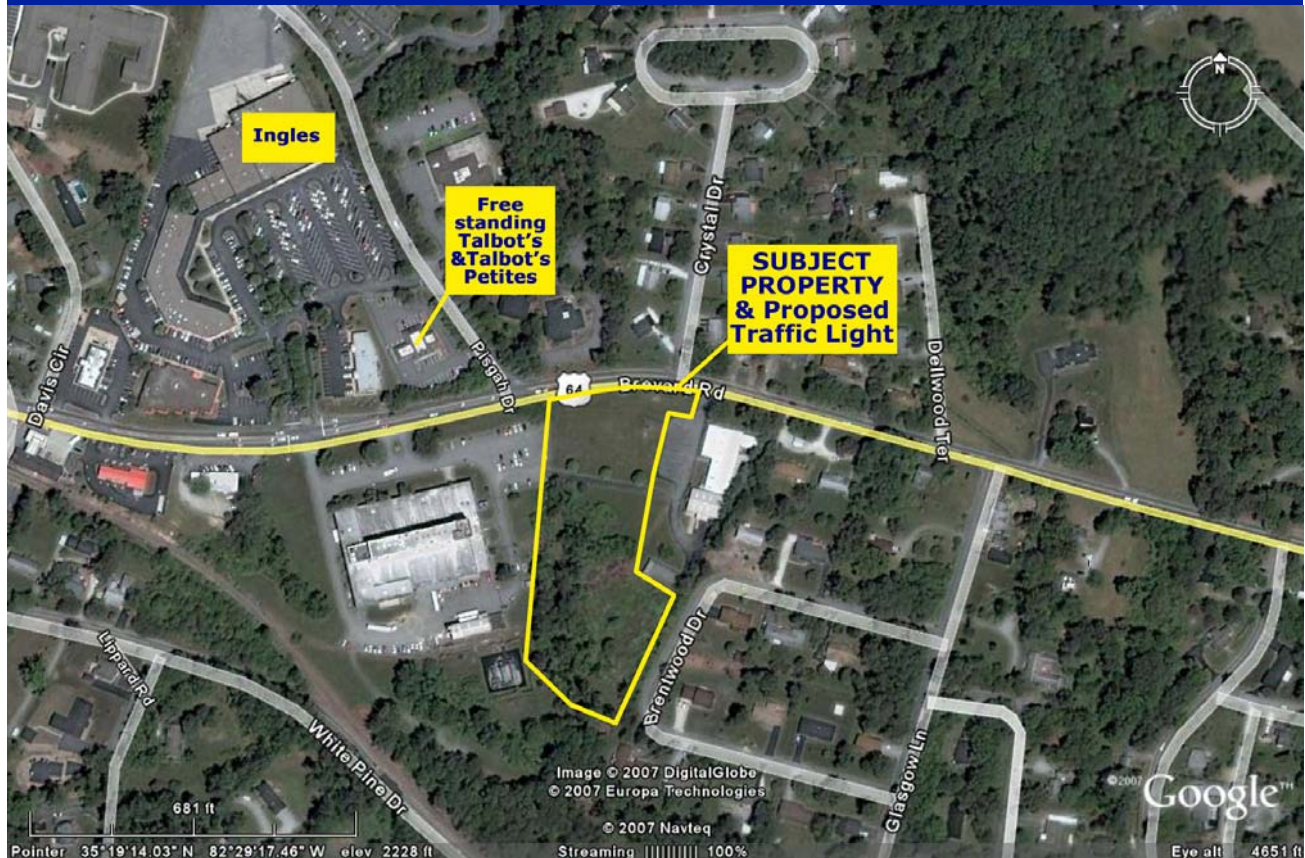


Commercial Development Land Available

Hendersonville, NC



Hwy 64 in Laurel Park

Sales Price
\$1,750,000

Able to Subdivide
9,600 SF Pad with Frontage
\$1,250,000

13,600 SF Pad
\$500,000

SITE SUITABLE FOR 23,200 SF COMMERCIAL OFFICE SPACE

- FRONTAGE ON HWY 64
- PRIME BANK OR PHARMACY
- ACROSS FROM LAUREL PARK SHOPPING CENTER
- ALL UTILITIES AVAILABLE
- ABLE TO SUBDIVIDE

CONTACT: JIM HEFFEL

828-698-3923, x224 Cell: 828-551-7115
GATEKEEPER PROPERTY MANAGEMENT, LLC

Every effort has been made to ensure the correctness of the enclosed data, but we assume no responsibility for errors or omissions. All conditions and pricing subject to change without notice.

